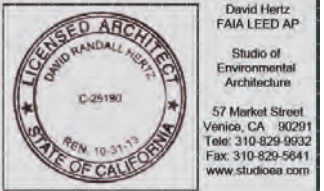
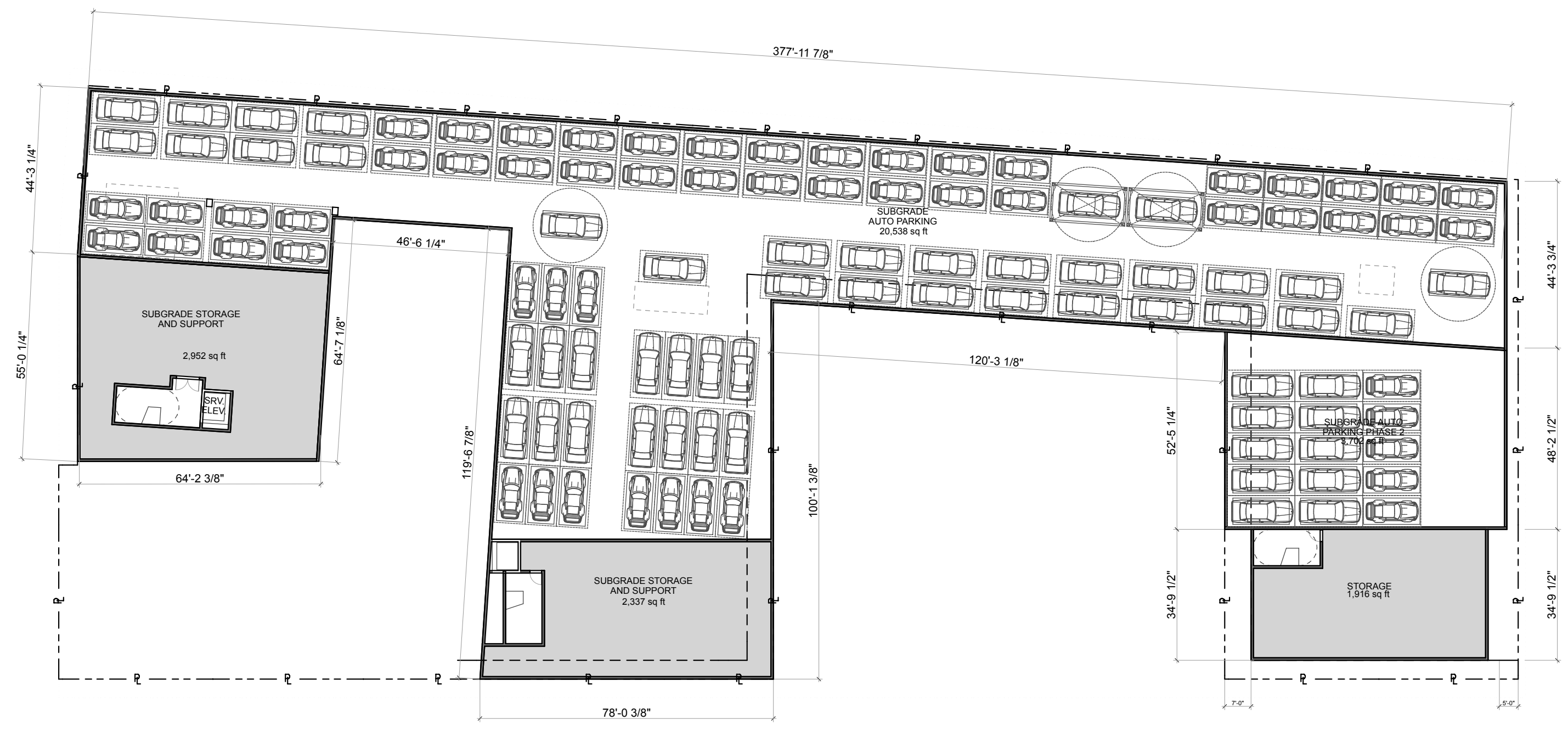
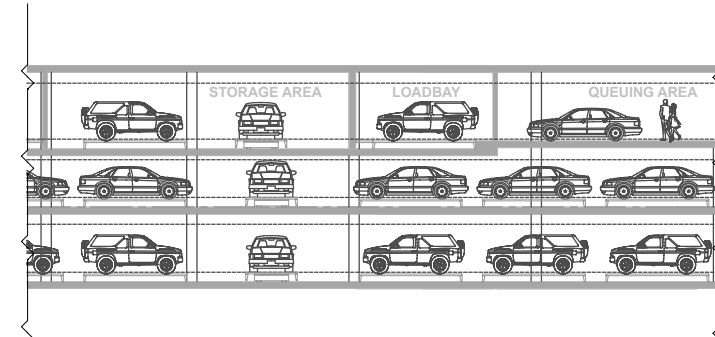


All ideas, designs, arrangements and plans indicated or represented by this drawing are owned by and are the property of David Hertz Architects Inc. and were created, evolved and developed for use on and in connection with the specified project on this sheet. None of such ideas, designs, arrangements or plans shall be used by or disclosed to any person, firm or corporation for any purpose whatsoever without the written permission of David Hertz Architects Inc. and are protected by U.S. copyright law. Written dimensions on this drawing shall have precedence over scaled dimensions. Contractors shall verify and be responsible for all dimensions and conditions on the job site. David Hertz Architects Inc. must be notified of any variations in the dimensions and conditions shown on this drawing as well as any variation between this drawing and the written specifications.



AK HOTEL
 1033 ABBOT KINNEY,
 VENICE, CA, 90291,



SUBGRADE PARKING
 SCALE: 1/16" = 1'-0" 1

PLAN REVISION LOG	
NO.	DESCRIPTION

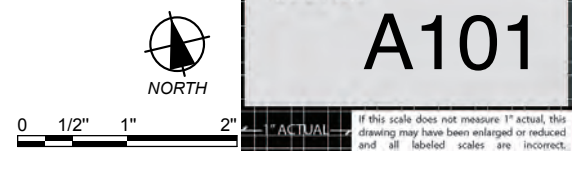
DRAWING PERMIT LOG	
NO.	DESCRIPTION
11/02/2012	PROJECT PERMIT PLANNING SUBMITTAL

SHEET TITLE:
**SUB-GRADE
 PLAN**

PROJECT NO:
 1111D

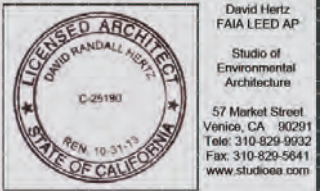
PRINT DATE:
 12/12/13

SHEET NO:
A101

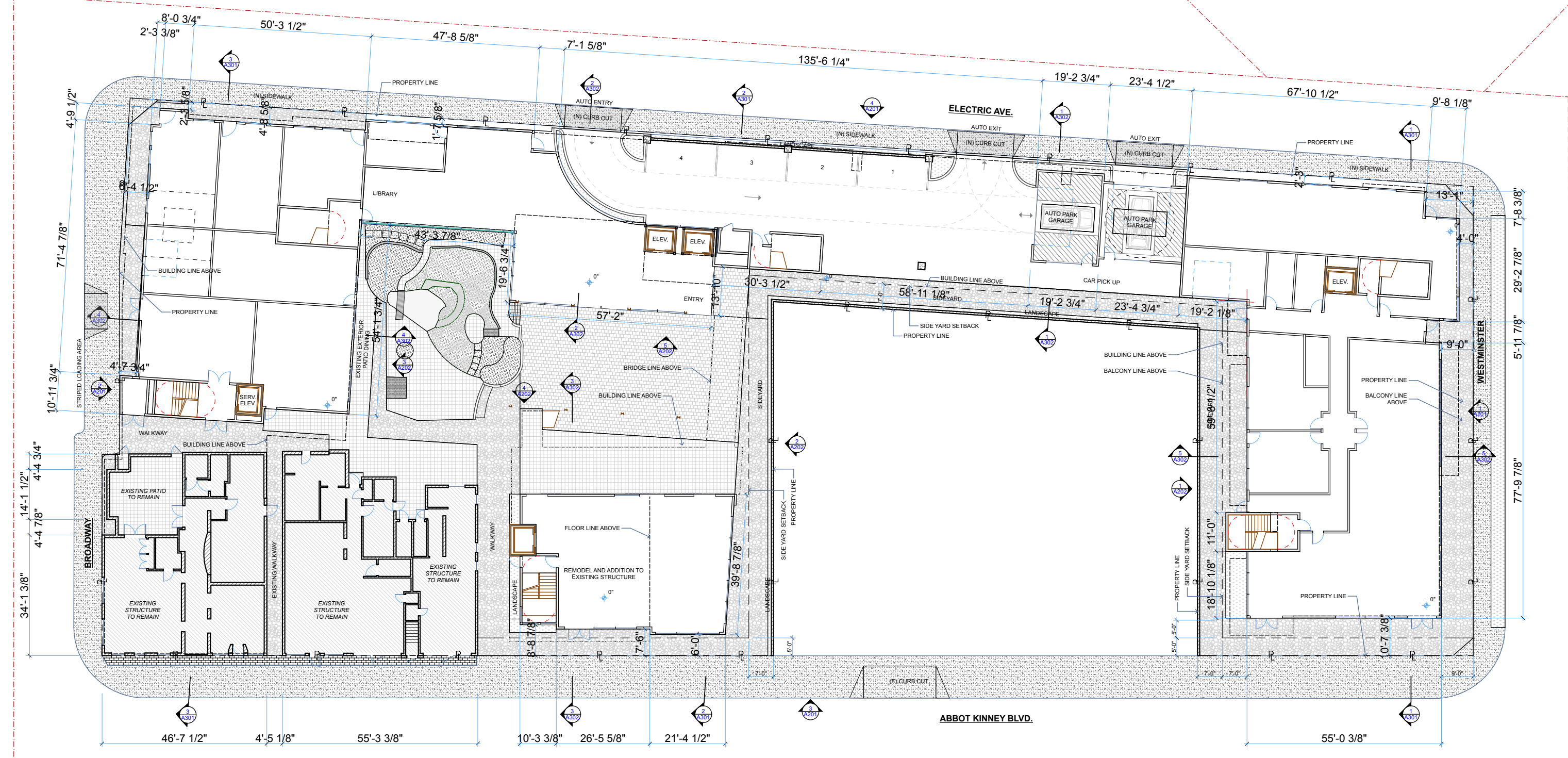


If this scale does not measure 1" actual, the drawing may have been enlarged or reduced and all labeled scales are incorrect.

All ideas, designs, arrangements and plans indicated or represented by this drawing are owned by and are the property of David Hertz Architects Inc. and were created, evolved and developed for use on and in connection with the specified project on this sheet. None of such ideas, designs, arrangements or plans shall be used by or disclosed to any person, firm or corporation for any purpose whatsoever without the written permission of David Hertz Architects Inc. and are protected by U.S. copyright laws. Written dimensions on this drawing shall have precedence over scaled dimensions. Contractors shall verify and be responsible for all dimensions and conditions on the job site. David Hertz Architects Inc. must be notified of any variations in the dimensions and conditions shown on this drawing as well as any variation between this drawing and the written specifications.



AK HOTEL
 1033 ABBOT KINNEY,
 VENICE, CA, 90291,



FIRST FLOOR PLAN
 SCALE: 1/16" = 1'-0" (1)

PLAN REVISION LOG	
NO.	DESCRIPTION

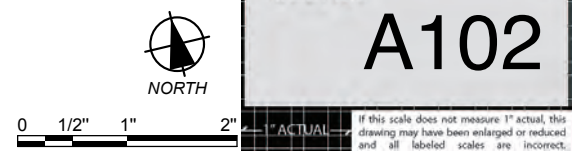
DRAWING PRINT LOG	
NO.	DESCRIPTION
11/02/2012	PROJECT PERMIT PLANNING SUBMITTAL

SHEET TITLE:
FIRST FLOOR PLAN

PROJECT NO: 1111D

PRINT DATE: 12/12/13

SHEET NO: **A102**

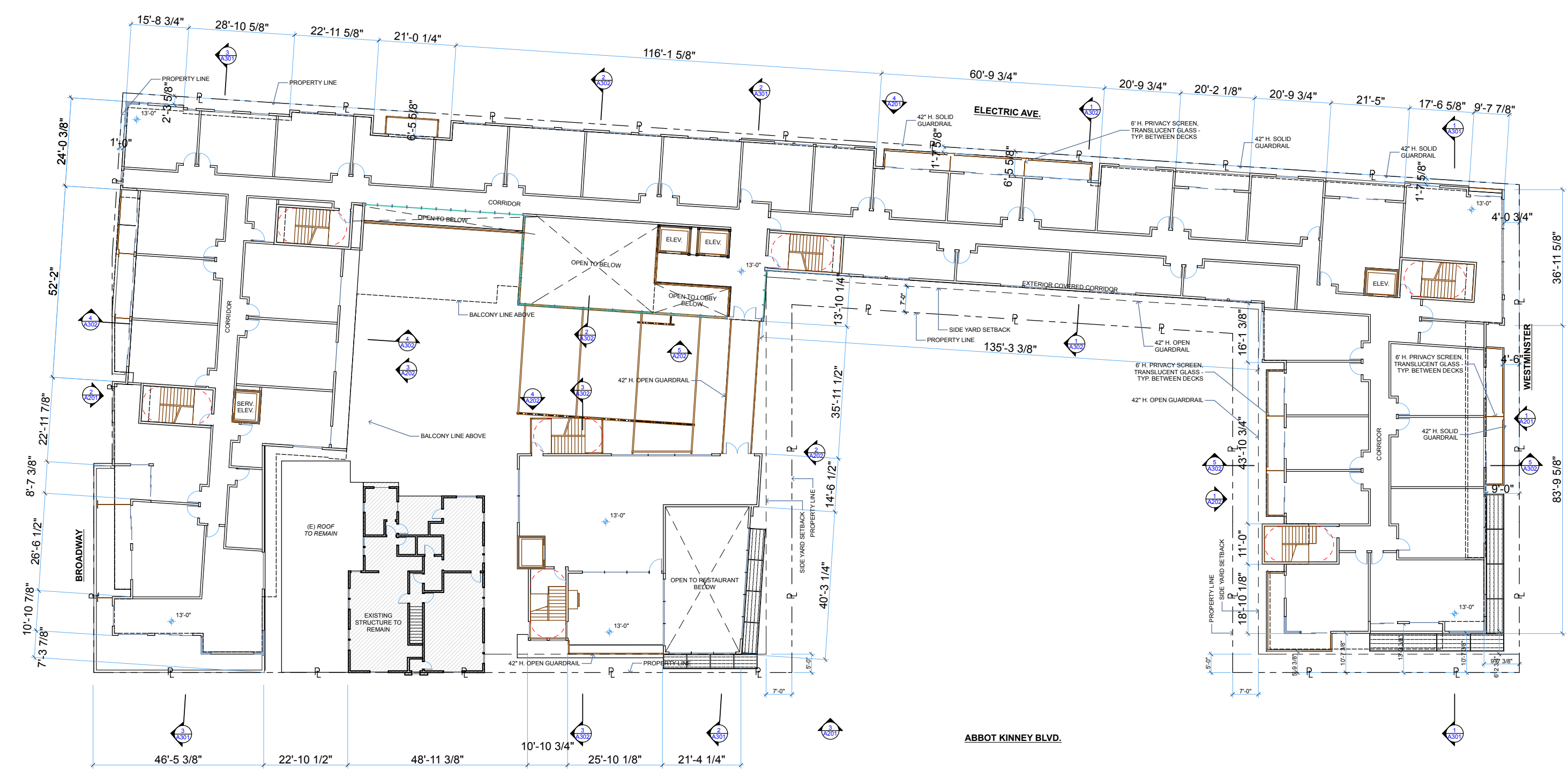


If this scale does not measure 1" actual, the drawing may have been enlarged or reduced and all labeled scales are incorrect.

All ideas, designs, arrangements and plans indicated or represented by this drawing are owned by and are the property of David Hertz Architects Inc. and were created, evolved and developed for use on and in connection with the specified project on this sheet. None of such ideas, designs, arrangements or plans shall be used by or disclosed to any person, firm or corporation for any purpose whatsoever without the written permission of David Hertz Architects Inc. and are protected by U.S. copyright law. Written dimensions on this drawing shall have precedence over scaled dimensions. Contractors shall verify and be responsible for all dimensions and conditions on the job site. David Hertz Architects Inc. must be notified of any variations in the dimensions and conditions shown on this drawing as well as any variation between this drawing and the written specifications.



AK HOTEL
 1033 ABBOT KINNEY, VENICE, CA, 90291,



SECOND FLOOR PLAN 1
 SCALE: 1/16" = 1'-0"

PLAN REVISION LOG	
NO.	DESCRIPTION

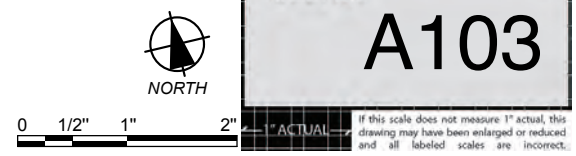
DRAWING PRINT LOG	
NO.	DESCRIPTION
11/03/2012	PROJECT PERMIT PLANNING SUBMITTAL

SHEET TITLE:
SECOND FLOOR PLAN

PROJECT NO: 1111D

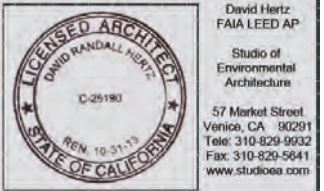
PRINT DATE: 12/12/13

SHEET NO: **A103**

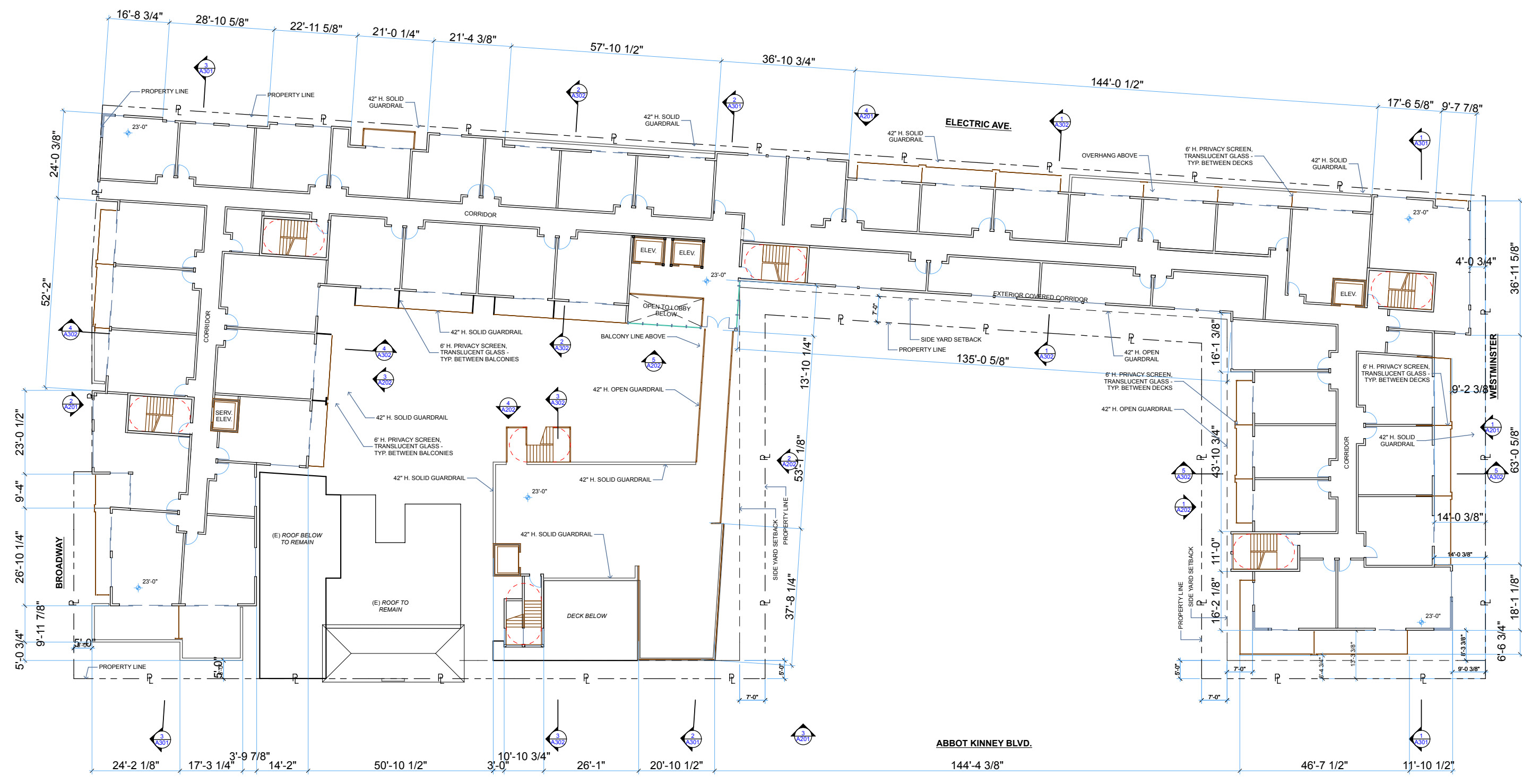


If this scale does not measure 1" actual, the drawing may have been enlarged or reduced and all labeled scales are incorrect.

All ideas, designs, arrangements and plans indicated or represented by this drawing are owned by and are the property of David Hertz Architects Inc. and were created, evolved and developed for use on and in connection with the specified project on this sheet. None of such ideas, designs, arrangements or plans shall be used by or disclosed to any person, firm or corporation for any purpose whatsoever without the written permission of David Hertz Architects Inc. and are protected by U.S. copyright law. Written dimensions on this drawing shall have precedence over scaled dimensions. Contractors shall verify and be responsible for all dimensions and conditions on the job site. David Hertz Architects Inc. must be notified of any variations in the dimensions and conditions shown on this drawing as well as any variation between this drawing and the written specifications.



AK HOTEL
 1033 ABBOT KINNEY, VENICE, CA, 90291,



THIRD FLOOR PLAN
 SCALE: 1/16" = 1'-0" ①

PLAN REVISION LOG	
NO.	DESCRIPTION

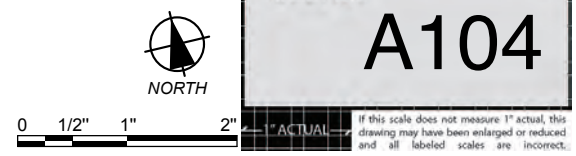
DRAWING PRINT LOG	
NO.	DESCRIPTION
11/02/2012	PROJECT PERMIT PLANNING SUBMITTAL

SHEET TITLE:
THIRD FLOOR PLAN

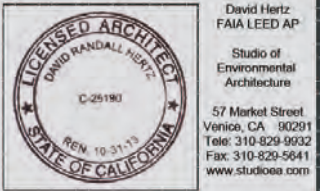
PROJECT NO: 1111D

PRINT DATE: 12/12/13

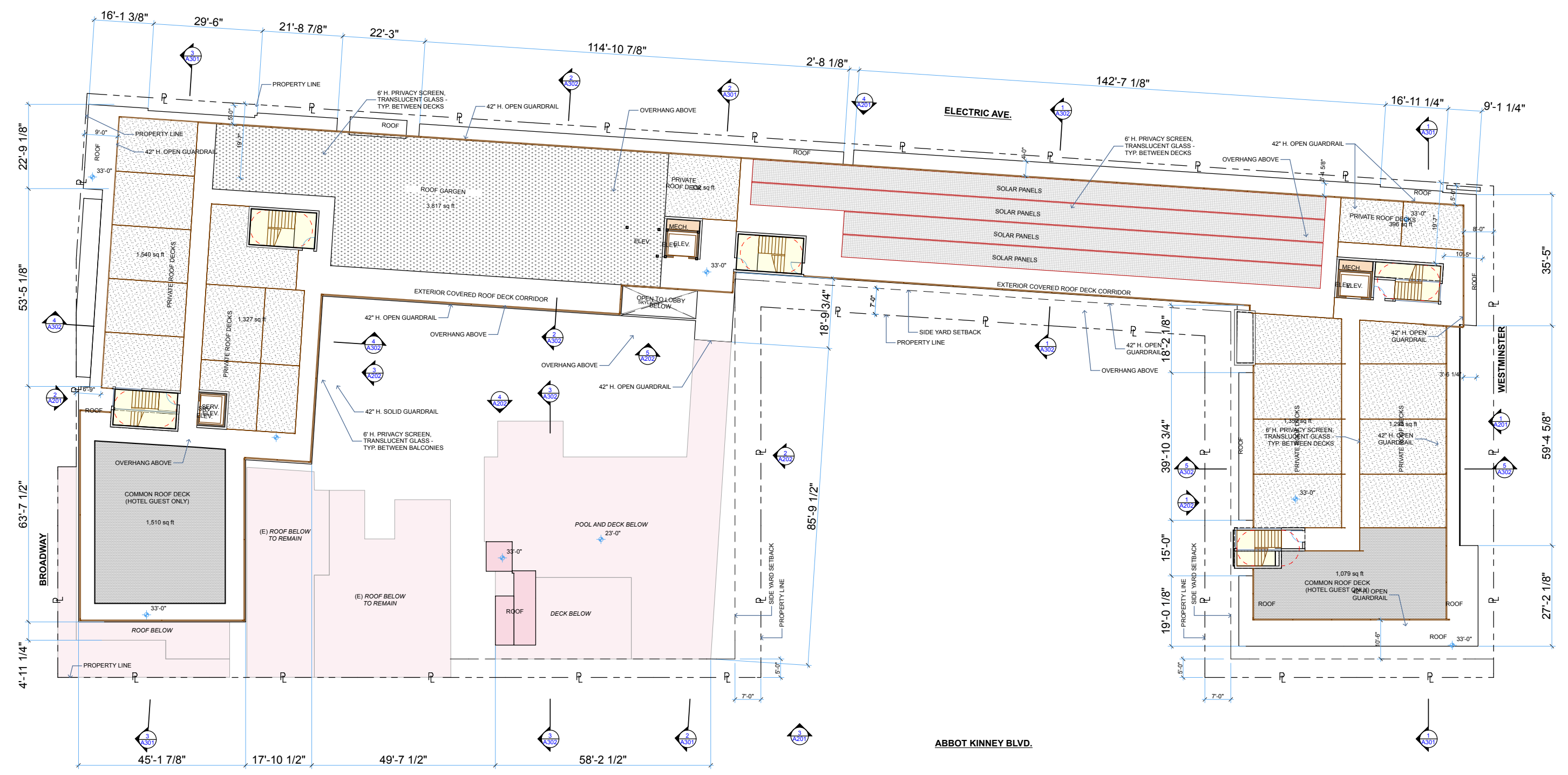
SHEET NO: **A104**



All ideas, designs, arrangements and plans indicated or represented by this drawing are owned by and are the property of David Hertz Architects Inc. and were created, evolved and developed for use on and in connection with the specified project on this sheet. None of such ideas, designs, arrangements or plans shall be used by or disclosed to any person, firm or corporation for any purpose whatsoever without the written permission of David Hertz Architects Inc. and are protected by U.S. copyright law. Within dimensions on this drawing shall have precedence over scaled dimensions. Contractors shall verify and be responsible for all dimensions and conditions on the job site. David Hertz Architects Inc. must be notified of any variations in the dimensions and conditions shown on this drawing as well as any variation between this drawing and the written specifications.



AK HOTEL
 1033 ABBOT KINNEY,
 VENICE, CA, 90291,



FOURTH FLOOR PLAN
 SCALE: 1/16" = 1'-0" ①

PLAN REVISION LOG	
NO.	DESCRIPTION

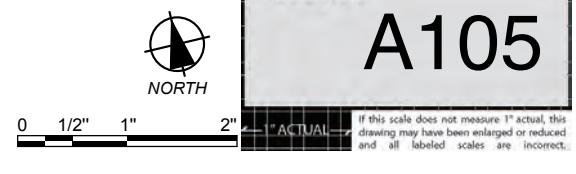
DRAWING PRINT LOG	
NO.	DESCRIPTION
11/03/2012	PROJECT PERMIT PLANNING SUBMITTAL

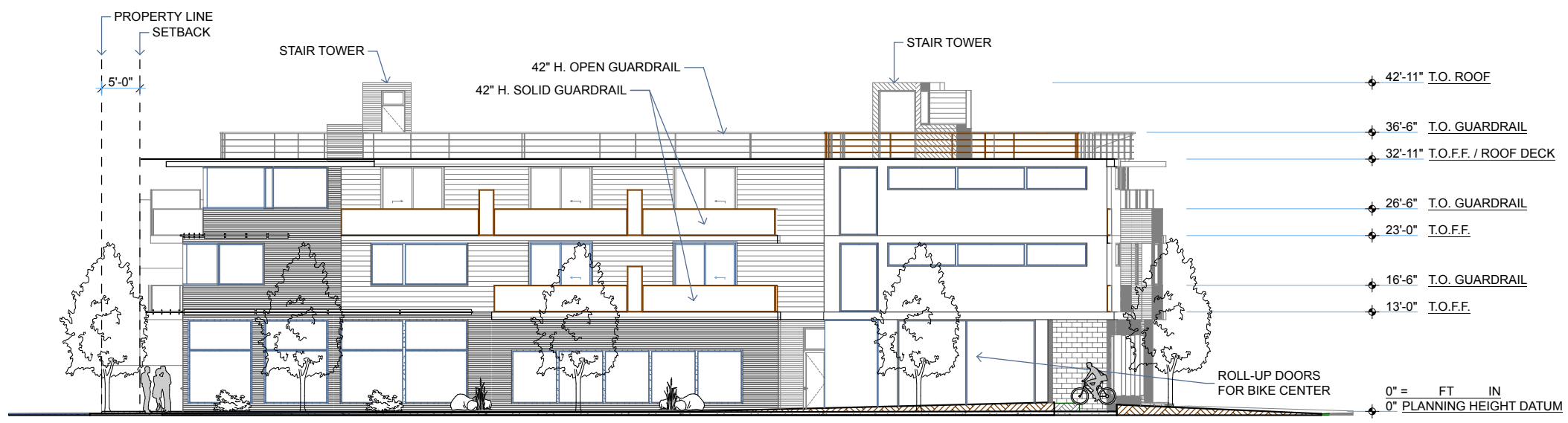
SHEET TITLE:
ROOF PLAN

PROJECT NO:
 1111D

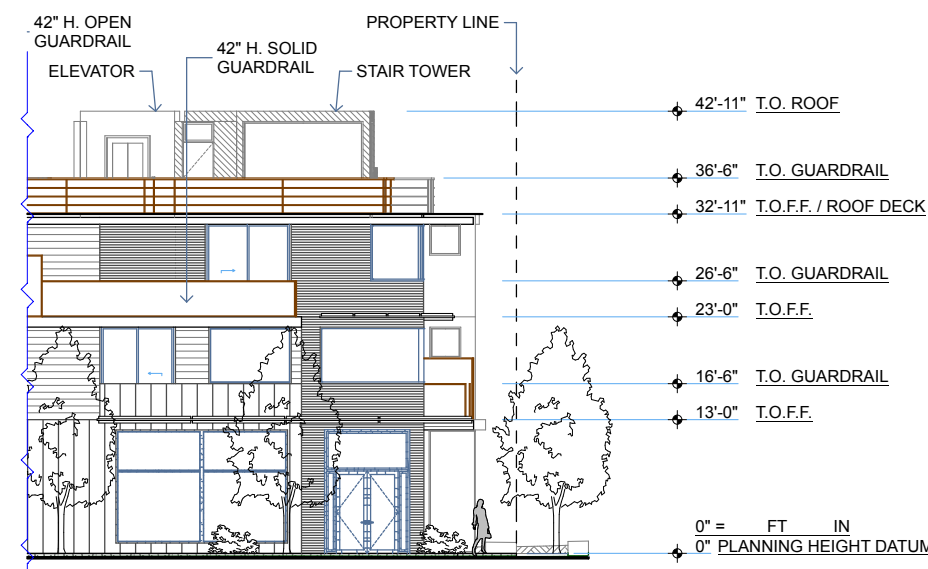
PRINT DATE:
 12/12/13

SHEET NO:
A105

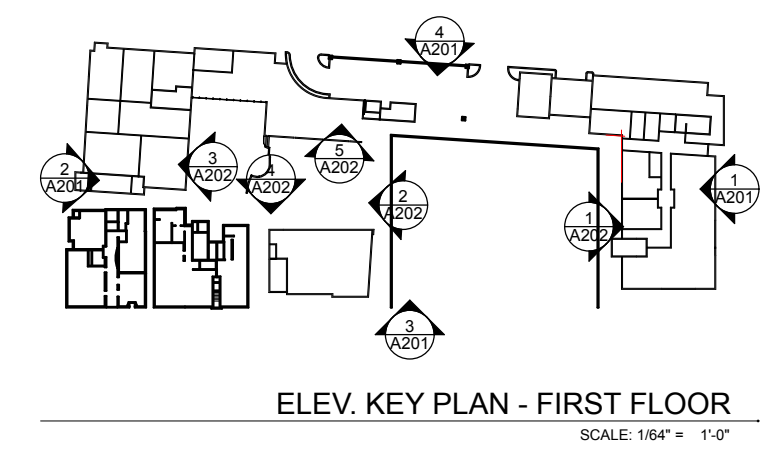




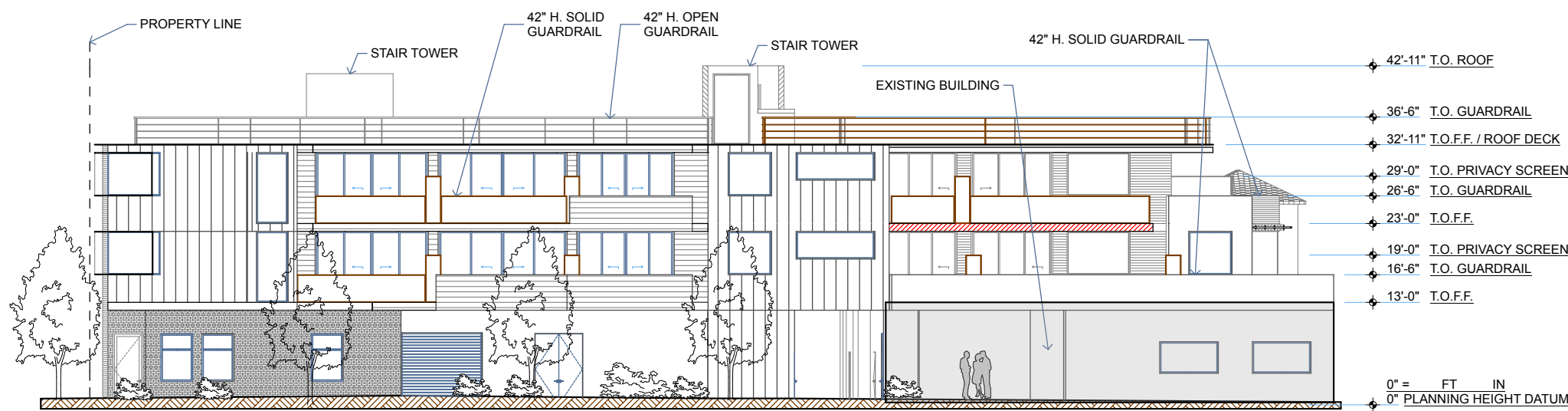
EAST ELEVATION (WESTMINSTER) 1
SCALE: 3/32" = 1'-0"



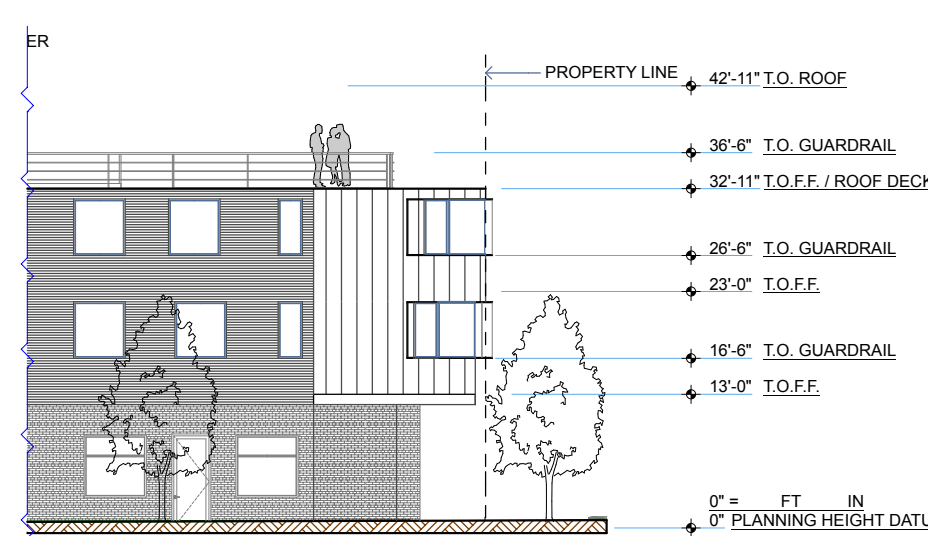
SOUTH ELEVATION (ABBOT KINNEY) 5
SCALE: 3/32" = 1'-0"



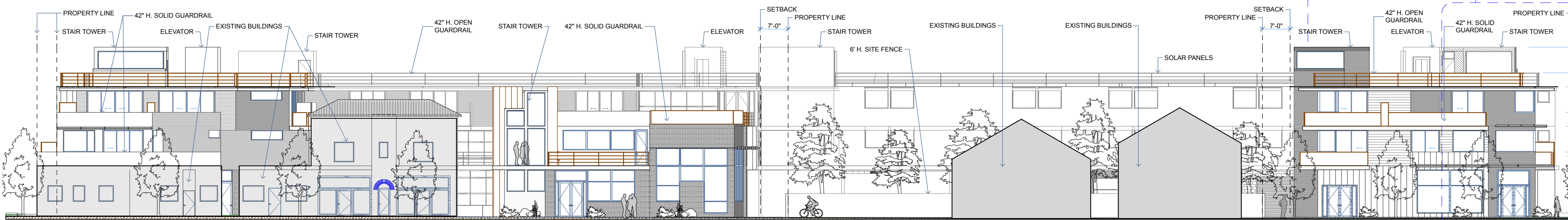
ELEV. KEY PLAN - FIRST FLOOR
SCALE: 1/64" = 1'-0"



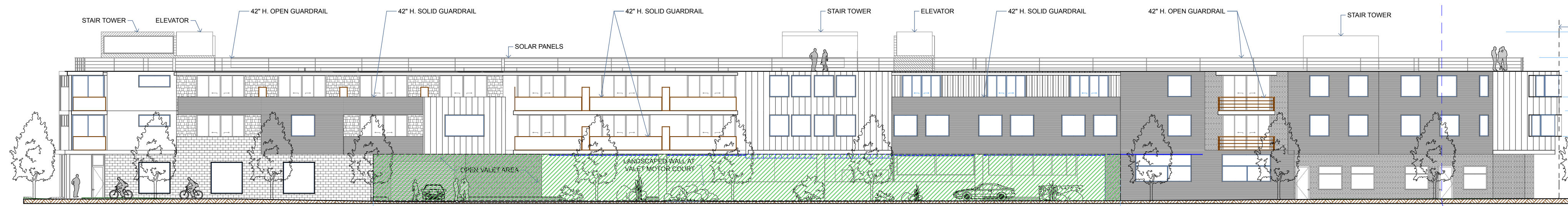
WEST ELEVATION (BROADWAY) 2
SCALE: 3/32" = 1'-0"



NORTH ELEVATION (ELECTRIC) 6
SCALE: 3/32" = 1'-0"



SOUTH ELEVATION (ABBOT KINNEY) 3
SCALE: 3/32" = 1'-0"



NORTH ELEVATION (ELECTRIC) 4
SCALE: 3/32" = 1'-0"

Open Valet Motor Court

ENVIRONMENTAL ARCHITECTURE
STUDIO OF
SA
DAVID HERTZ ARCHITECTS

All ideas, designs, arrangements and plans indicated or represented by this drawing are owned by and are the property of David Hertz Architects Inc. and were created, evolved and developed for use on and in connection with the specified project on this sheet. None of such ideas, designs, arrangements or plans shall be used by or disclosed to any person, firm or corporation for any purpose whatsoever without the written permission of David Hertz Architects Inc. and are protected by U.S. copyright laws. Written dimensions on this drawing shall have precedence over scaled dimensions. Contractors shall verify and be responsible for all dimensions and conditions on the job site. David Hertz Architects Inc. must be notified of any variations in the dimensions and conditions shown on this drawing as well as any variation between this drawing and the written specifications.

David Hertz
FAMA LEED AP
Studio of
Environmental
Architecture
57 Market Street
Venice, CA 90291
Tel: 310-829-9632
Fax: 310-829-5941
www.studioof.com

AK HOTEL
1033 ABBOT KINNEY,
VENICE, CA, 90291,

PLAN REVISION LOG	
NO.	DESCRIPTION

DRAWING PRINT LOG	
NO.	DESCRIPTION
11/03/2012	PROJECT PERMIT PLANNING SUBMITTAL

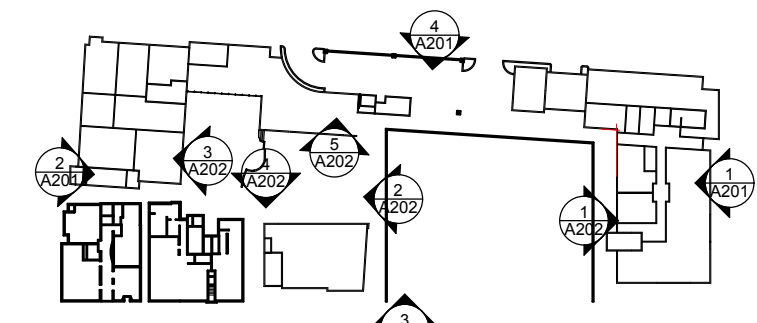
SHEET TITLE:
BUILDING ELEVATIONS

PROJECT NO: 1111D

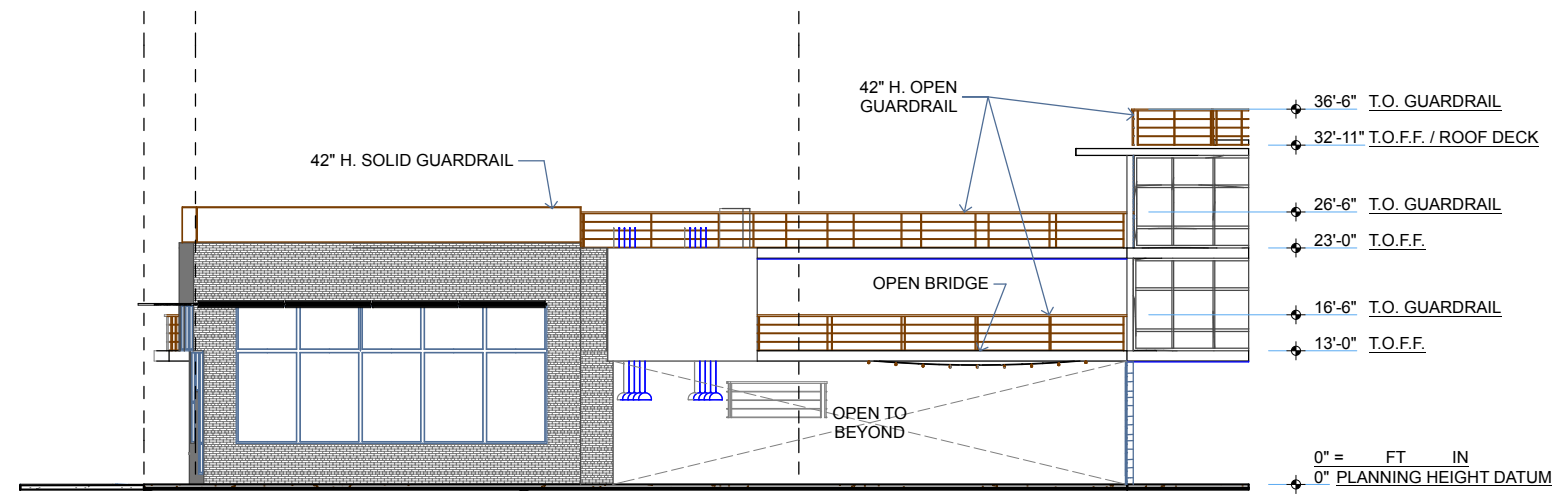
PRINT DATE: 12/12/13

SHEET NO: **A201**

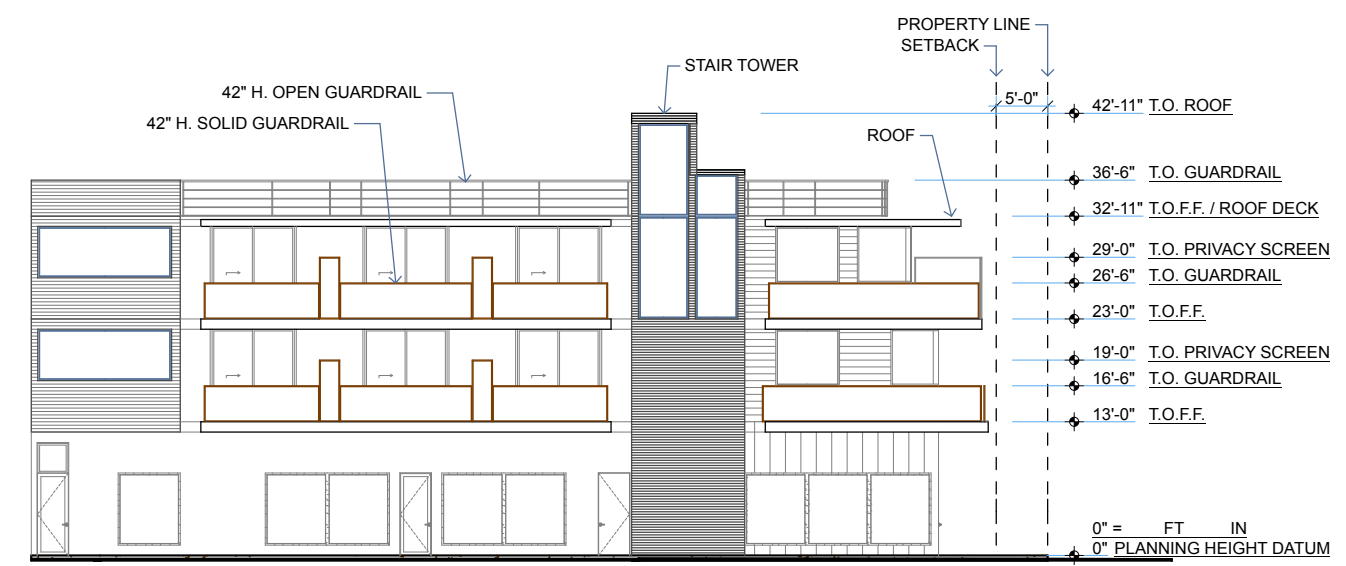




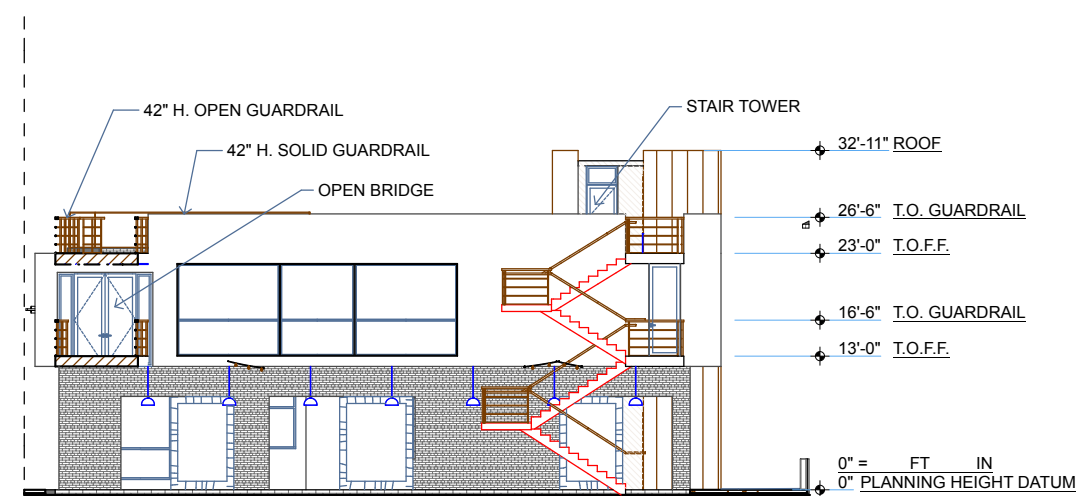
ELEV. KEY PLAN - FIRST FLOOR
SCALE: 1/64" = 1'-0"



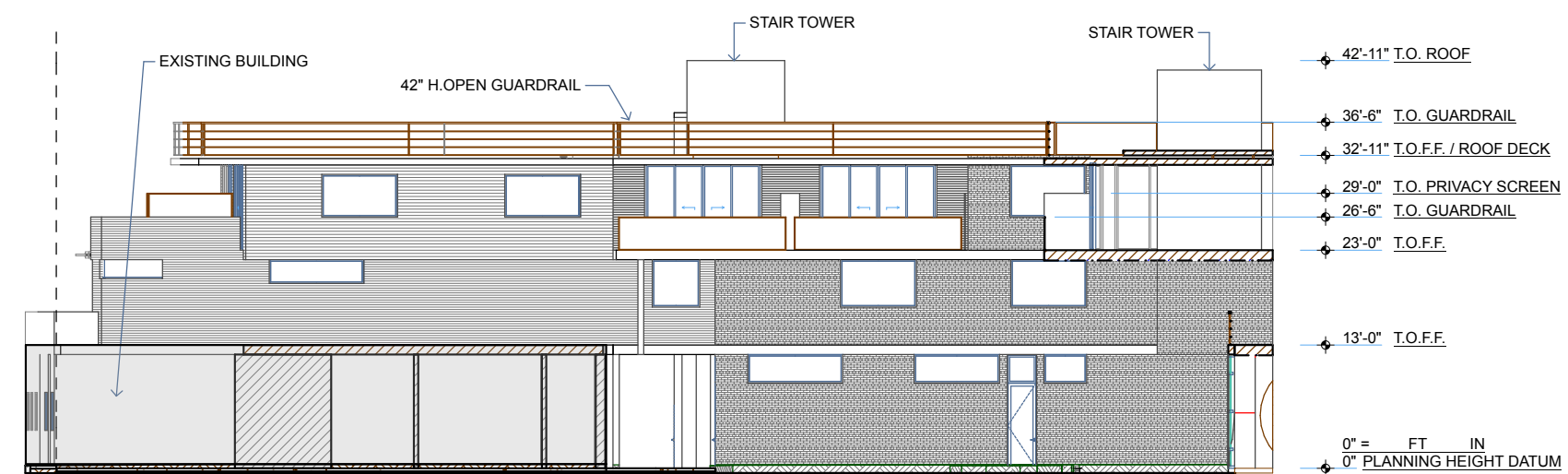
SIDE ELEVATION EAST
SCALE: 3/32" = 1'-0" 2



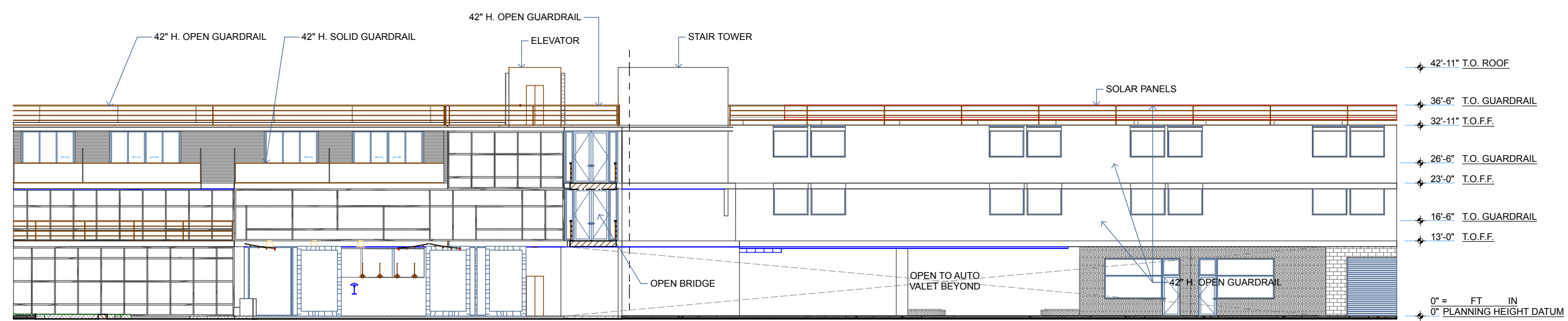
SIDE ELEVATION WEST
SCALE: 3/32" = 1'-0" 1



COURTYARD 3 ELEVATION
SCALE: 3/32" = 1'-0" 4



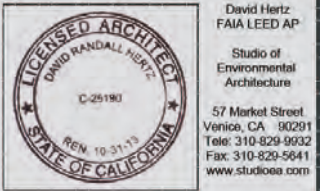
COURTYARD 2 ELEVATION
SCALE: 3/32" = 1'-0" 3



COURTYARD 1 ELEVATION
SCALE: 3/32" = 1'-0" 5



All ideas, designs, arrangements and plans indicated or represented by this drawing are owned by and are the property of David Hertz Architects Inc. and were created, evolved and developed for use on and in connection with the specified project on this sheet. None of such ideas, designs, arrangements or plans shall be used by or disclosed to any person, firm or corporation for any purpose whatsoever without the written permission of David Hertz Architects Inc. and are protected by U.S. copyright law. Written dimensions on this drawing shall have precedence over scaled dimensions. Contractors shall verify and be responsible for all dimensions and conditions on the job site. David Hertz Architects Inc. must be notified of any variations in the dimensions and conditions shown on this drawing as well as any variation between this drawing and the written specifications.



AK HOTEL
1033 ABBOT KINNEY,
VENICE, CA, 90291,

PLAN REVISION LOG	
NO.	DESCRIPTION

DRAWING PRINT LOG	
NO.	DESCRIPTION
11/02/2012	PROJECT PERMIT PLANNING SUBMITTAL

SHEET TITLE:
BUILDING ELEVATIONS

PROJECT NO:
1111D

PRINT DATE:
12/12/13

SHEET NO:
A202

