

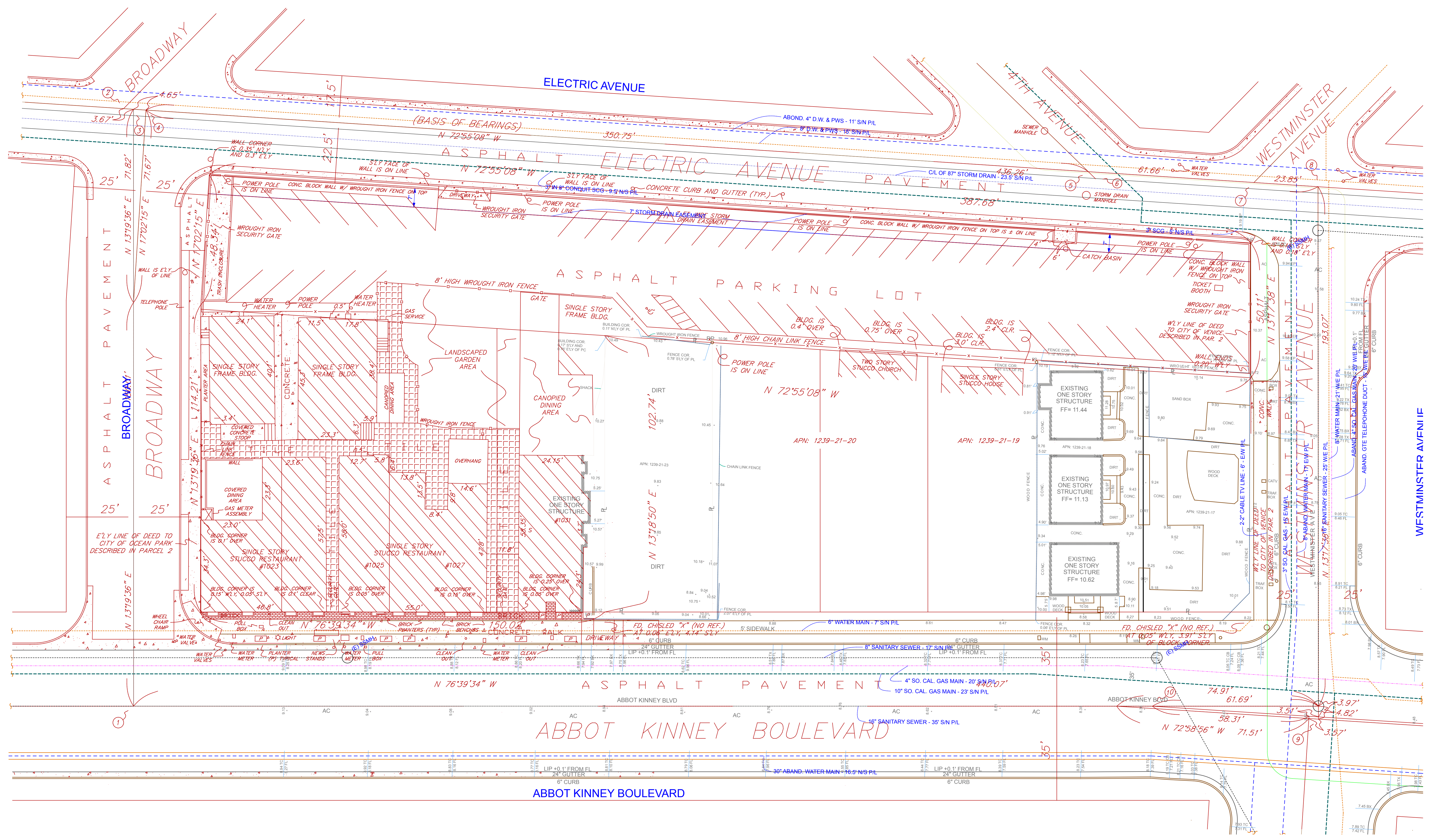


DAVID HERTZ ARCHITECTS  
 All ideas, designs, arrangements and plans indicated or represented by this drawing are owned by and are the property of David Hertz Architects, Inc. and when created, revised and developed for use on and in connection with the specified project on this sheet. Name of such ideas, designs, arrangements or plans shall be used by or disclosed to any person, firm or corporation for any purpose whatsoever without the written permission of David Hertz Architects, Inc. and are protected by U.S. copyright laws. Written dimensions on this drawing shall have precedence over scaled dimensions. Contractors shall verify and be responsible for all dimensions and conditions on the job site. David Hertz Architects, Inc. must be notified of any variations in the dimensions and conditions shown on this drawing as well as any variation between this drawing and the written specifications.



**ABBOT KINNEY HOTEL**

1033 ABBOT KINNEY, VENICE, CA, 90291



SITE SURVEY | ALTA  
 SCALE: 1/16" = 1'-0" ①

PLAN REVISION LOG	
NO.	DESCRIPTION

DRAWING PRINT LOG	
NO.	DESCRIPTION
11/30/2012	PROJECT PERMIT PLANNING SUBMITTAL

SHEET TITLE: <b>SITE SURVEY</b>	
PROJECT NO.:	1111D
PRINT DATE:	5/1/13
SHEET NO.:	<b>AS02</b>

